

GENERAL ASSISTANCE

State of New Mexico Human Services
TANF, WIC, LIHEAP, TEFAP, Food Stamps,
Medicaid, Medicare
(800) 432-6217

CHILD CARE

Albuquerque

City of Albuquerque Child & Family
Development Services (0-5 yrs old, low income)
767-6500

Statewide

New Mexico Kids Child Care Referral
1634 University Blvd
277-7900/ (800)691-9067

NM Dept. of Children, Youth & Families
P.O. Drawer 5160, Santa Fe, NM
(800) 832-1321

CLOTHING ASSISTANCE

Albuquerque

BCCPTA Clothing Bank-school clothing
(See APS school nurse/counselor for referral)
344-7481

Birthright of Albuquerque (maternity & infant clothing)
262-2235

John Marshall Multi-Service Center
848-1345

Storehouse
842-6491

Rio Rancho & Bernalillo

Storehouse West
892-2077

Los Lunas & Belen

Midwest NM CAP
865-9697

Dial 2-1-1

The United Way 2-1-1 line provides free information & referral to health and human services, government agencies, and community based organizations covering the following areas:

Basic Human Needs Resources:

Food Pantries, Clothing Banks, Shelters, Rent Assistance, Utility Assistance

Physical & Mental Health Resources:

Medicaid & Medicare, In-Patient Services, Counseling, Crisis Lines

Domestic Violence & Sexual Assault:

Shelters, Counseling, Outreach & Prevention

Senior Services & Persons with Disabilities:

Adult Day Care, Meals, Respite Care, Transportation

Children, Youth and Family Supports:

Child Care, Protective Services, Family Resource Centers

Volunteer Opportunities & Donations

**The United Way 2-1-1 line
is a phone service only.**

No walk-in service available

Calls answered 7 days a week, 8am-Midnight

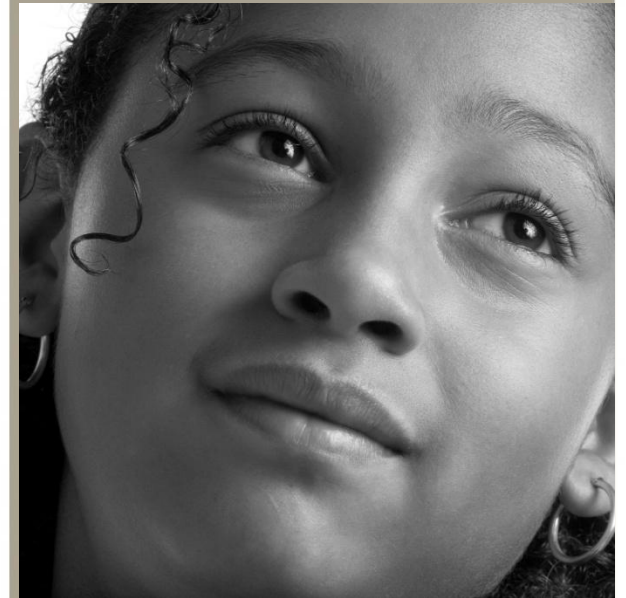
Information also available online at:

www.uwcnm.org/help



Brochure updated 3/20//2012

*In Times of Need,
Services are Available*



INFORMATION & REFERRAL

TOLL FREE: 2-1-1

OR (505) 245-1735





EMERGENCY NUMBERS

DIAL 9-1-1 IN CASE OF AN EMERGENCY!

NON-EMERGENCY POLICE

242-COPS (2677)

AGORA CRISIS CENTER & SUICIDE HOTLINE

277-3013 or Toll Free (866)435-7166

NEW MEXICO POISON CENTER

272-2222

RAPE CRISIS CENTER OF NEW MEXICO

266-7711

AFAC-ALBUQUERQUE FAMILY ADVOCACY CENTER

243-2333 (Domestic Violence, Assault & Abuse Services)

CHILD PROTECTIVE SERVICES

841-6100/ (800) 797-3260

ADULT PROTECTIVE SERVICES

(866) 654-3219

THE RUNAWAY HOTLINE

(800) 621-4000

AIDS HOTLINE-CDC HOTLINE

(800) 232-4636

ABQ HEALTHCARE FOR THE HOMELESS

766-5197

THE CDD CENTER FOR DEVELOPMENT & DISABILITY

(800) 552-8195

ELDERLY ASSISTANCE

Albuquerque

Catholic Charities
6001 Marble NE
724-4670

City of Albuquerque Department of Senior Affairs
714 Seventh Street SW
764-6400

Jewish Family Services
5520 Wyoming NE, Ste. 200
291-1818

New Mexico Aging & Long Term Services
(866)842-9230 – Toll Free

Los Lunas & Belen

Mid Rio Grande RSVP
864-8630

Rio Rancho & Bernalillo

Meadowlark Senior Center
891-5018

FOOD STAMPS

State of NM Human Services
(800)432-6217

FOOD PANTRY'S

Call pantries for information regarding requirements

Albuquerque

City of Albuquerque
Neighborhood Services
(Call city information line for locations
throughout Albuquerque)
3-1-1

Echo, Inc.
(60+ or families w/children 0-6yrs)
242-6777

Jewish Family Services
291-1818

Rio Grande Food Project
831-3778

St. Vincent de Paul Society
346-1504

St. Michael's & All Angel Pantry
345-8147

The Storehouse
842-6491

Los Lunas & Belen

Midwest NM CAP
865-9697

First Baptist Church
864-8621

Rio Rancho & Bernalillo

Storehouse West
892-2077

St. Felix Pantry, Inc.
891-8075

Moriarty- Torrance County

Bethel Community Storehouse
832-6642

UTILITY HELP

The following agencies require a
Disconnect Notice. Call agency for
guidelines/funding status.

Statewide

LIHEAP
(800) 283-4465

Albuquerque

Jewish Family Services
291-1818

The Storehouse
842-6491

RENT/UTILITY HELP

The following agencies require a
Disconnect Notice or Eviction Notice.
Call agency for guidelines/funding status.

Albuquerque

Catholic Charities
724-4670

Noon Day Ministry
246-8001

St. Vincent de Paul Society
346-1500

The H.E.L.P.
265-3717

The Salvation Army
872-1171

Rio Rancho & Bernalillo

Storehouse West
892-2077

Los Lunas & Belen

Midwest NM CAP
865-9697

SHELTERS

Women

Women's Center of Hope
243-3310

Women with Children

Barrett Foundation
243-4887

SHELTERS Cont.

Victims of Domestic Violence

Albuquerque

S.A.F.E. House
242-4219

Belen

Valencia Shelter for Victims of Domestic Violence
864-1383

Rio Rancho & Bernalillo

Haven House
896-4869

Pregnant Teens

Marie Amadea Shelter
242-1516

Youth

New Day Runaway House
2720-A Carlisle NE
260-9912

Men

ABQ Opportunity Center for the Homeless
715 Candelaria NE
344-2323

Albuquerque Rescue Mission
509 2nd Street SW
346-4673

Good Shepherd Center
218 Iron Street SW
243-2527

Families

Joy Junction
4500 2nd Street SE
(800) 924-0569

Family Promise of Albuquerque
268-0331 (Call for appointment & location)

Alb. Rescue Mission (Families w/ children under 10)
346-4673 ext 248 (November – March)

Day Shelters

St. Martin's Hospitality Center -1201 3rd Street NW
843-9405

Motel Vouchers for Families w/ Children

Albuquerque Health Care for the Homeless
242-4644